

# Signing Out Of Windows 10

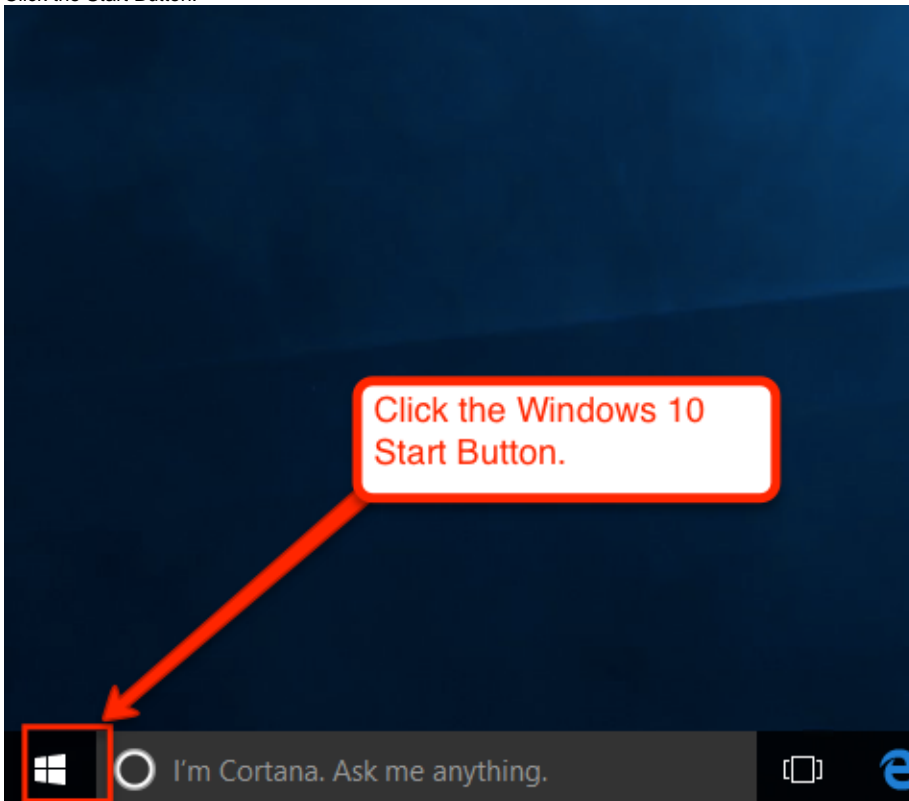
When you are finished using a Windows 10 classroom computer, please sign your account out of that computer rather than shutting it down. Shutting down a shared classroom computer between classes will cause the next faculty member who teaches using that computer a delay in teaching his or her class waiting for the computer to restart.

Below is a step-by-step guide for signing out of your account on Windows 10.

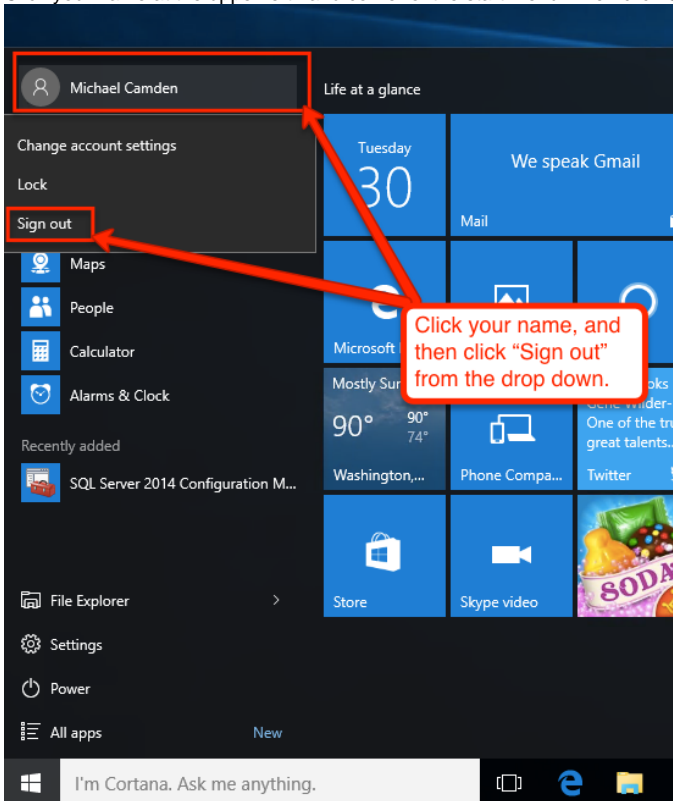
## Step-by-step guide

If Windows 10 is running the version prior to the Anniversary update

1. Click the Start Button.



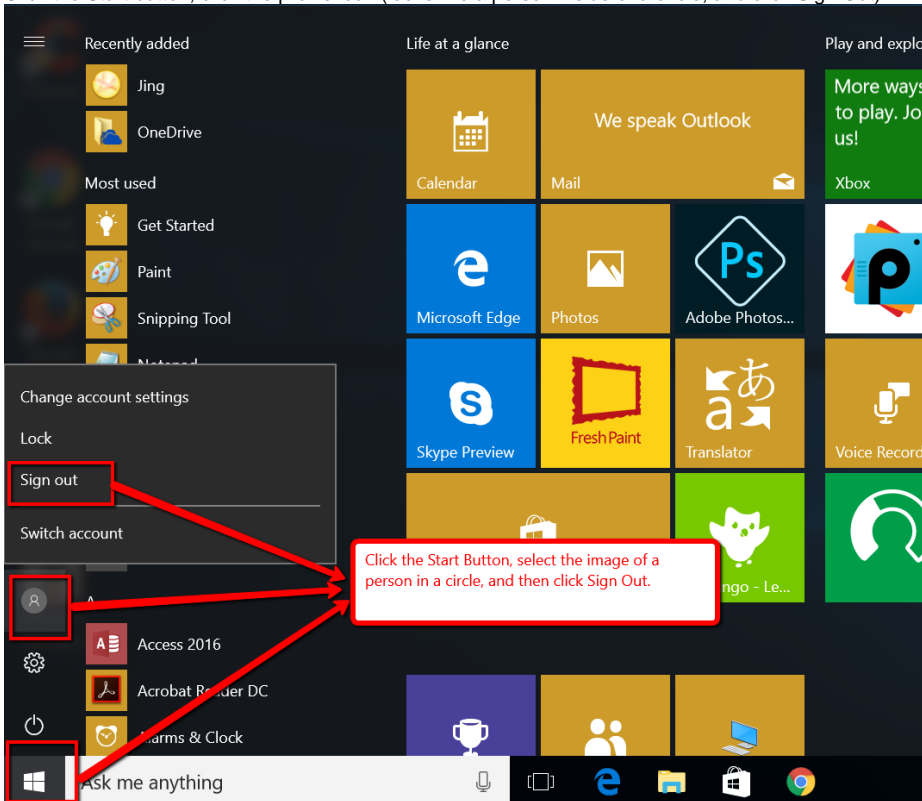
2. Click your name at the upper left hand corner of the start menu. Then click Sign out.



3. Alternatively, you can press <CTRL><ALT><Delete> and then click Sign out.

If Windows 10 is running the Anniversary update or later:

1. Click the Start button, click the profile icon (looks like a person inside of a circle, and click Sign Out).



2. Alternatively, you can press <CTRL><ALT><Delete> and then click Sign out.

Related articles

- [Signing Out Of Windows 10](#)