

Abernathy Field Station Home

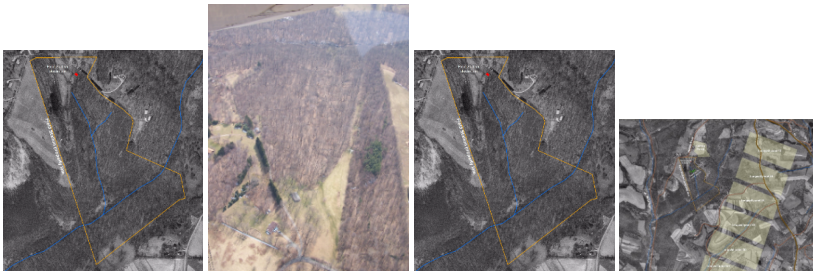
This is the home of the Abernathy Field Station wiki space.

Abernathy Field Station (AFS) is a 57-acre parcel of land located conveniently just five miles from campus. This ideal outdoor classroom encompasses many different ecosystems including mixed deciduous forest, a stand of conifers, several springseeps, two larger perennial streams, a wetland, and a mowed field. These habitats support diverse assemblages of birds, salamanders, fishes, small mammals, white-tailed deer, insects, as well as over 100 trees.

Faculty and students are able to study the structure and function of the ecosystems of AFS through both coursework and independent research projects. Access to the Abernathy Field Station has been made possible by the generous support of Dr. Ernest and Janet Abernathy. W&J is committed to preserving the ecological integrity of the land and maintaining its value as an outdoor classroom in perpetuity.

Please contact [Dr. James March](#) for more information.

Aerial Views of AFS



Explore More

- [Student Research](#)